

## WATER PROTECTION ACT

### OUTLINE

#### Main Parts

- ◆ Water Protection
- ◆ Watershed Management
- ◆ Compliance Provisions

Manitoba Water Stewardship

## WATER PROTECTION ACT

### WATER PROTECTION

- ◆ Regulations re. Water Quality
- ◆ Water Quality Management Zones
- ◆ Invasive Species
- ◆ Water Conservation
- ◆ Serious Water Shortage

Manitoba Water Stewardship

## WATER PROTECTION ACT

### WATERSHED MANAGEMENT

- ◆ Watersheds & Planning Authorities
- ◆ Plan Considerations
- ◆ Plan Content, approval, amendment
- ◆ Manitoba Water Council
- ◆ Water Stewardship Fund

Manitoba Water Stewardship

## WATER PROTECTION ACT

### COMPLIANCE PROVISIONS

- ◆ Officers and Powers
- ◆ Offences and Penalties
- ◆ Reporting Violations
- ◆ Public Registry
- ◆ Regulations

Manitoba Water Stewardship

## WATERSHED PLANNING

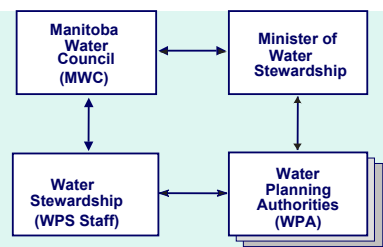
### OUTLINE

- ◆ Key Players
- ◆ Province-Wide Approach
- ◆ WPA Criteria and Support
- ◆ Planning Process
- ◆ Establishing Planning Priorities
- ◆ Implementation Considerations
- ◆ Financial Support

Manitoba Water Stewardship

## WATERSHED PLANNING

### KEY PLAYERS



Manitoba Water Stewardship

# WATERSHED PLANNING

## PROVINCE-WIDE APPROACH

- 3 Phases: 1. Agro MB – 1<sup>st</sup> 6 years
- 2. Developed north
- 3. Undeveloped north

### Phase 1.

- ◆ Agro-Manitoba
- ◆ Establish “north” process

# WATERSHED PLANNING

## WPA CRITERIA

- ◆ Represent watershed area
- ◆ Minimum size 2000 sq. km's.
- ◆ Incorporated entity with administration and implementation capability
- ◆ Can engage stakeholders
- ◆ Have land and water interests

# WATERSHED PLANNING

## WPA SUPPORT

- ◆ Coordination, WPS staff (4.5 FTEs)
- ◆ Consultants
- ◆ Partners

# WATERSHED PLANNING

## PLANING PROCESS



# WATERSHED PLANNING

## ESTABLISHING PRIORITIES

- ◆ State of Watershed Report
- ◆ Source Water Protection
- ◆ Drainage Plan
- ◆ Flood Control Plan
- ◆ Emergency plan
- ◆ Etc. etc.



Balance/flexibility

# WATERSHED PLANNING

## IMPLEMENTATION CONSIDERATIONS

- ◆ Process stakeholder-led (planning, implementation, monitoring, review)
- ◆ Start with willing – success
- ◆ Increased cooperation PDs and CDs
- ◆ Link water and land use planning

## WATERSHED PLANNING

### IMPLEMENTATION CONSIDERATIONS

- ◆ Science based plans
- ◆ Interdepartmental assistance
- ◆ Start January 2006
- ◆ Complete Agro-MB (30) by 2012
- ◆ Initiate 5 plans each year
- ◆ Plan timeline – 2 years per plan

Manitoba Water Stewardship

## WATERSHED PLANNING

### FINANCIAL SUPPORT

#### PROVINCIAL

- ◆ Start-up grant (\$25K)
- ◆ CD cost-sharing (75/25)
- ◆ Water Stewardship Fund

#### OTHER

- ◆ Partnerships

Manitoba Water Stewardship

## WATER PLANNING IN MANITOBA

**THE END**

**Thank you**

Manitoba Water Stewardship