

Manitoba Protected Areas Audit, Spring 1999 to Fall 2006 - Summary Statistics

MANITOBA WILDLANDS

		Percentage (%) Area of Manitoba
Total Protected Areas (All Designations Types) as of 1989: (includes Riding Mountain National Park)	350,000 Ha <small>3, 4, 6</small>	0.5%
Total Protected Areas (All Designations Types) as of Spring 1999: (includes Wapusk National Park)	5,241,500 Ha <small>1, 2, 3, 4</small>	8.1%
Total Protected Areas (All Designations Types) as of June 2000: (End of the Endangered Spaces Campaign - WWF Canada)	5,579,883 Ha <small>1, 2, 3, 4, 6</small>	8.6%
New Protected Provincial Parks since September 1999: (Criddle/Vane Homestead Provincial Park, Pembina Valley Provincial Park, Rivers Provincial Park, Trappist Monastery Heritage Park, Manigotagan Provincial Park) [5]	7,786Ha <small>4, 5</small>	~
New Protected Park Reserves since September 1999: (Birch Island Park Reserve, Duff Roblin Park Reserve, Fisher Bay Park Reserve, Goose Island Park Reserve, Grand Island Park Reserve, Hudwin Park Reserve, Kinnow Bay Park Reserve, Pelican Islands Park Reserve, Pemmican Island Park Reserve, Sturgeon Bay Park Reserve, Walter Cook Uplands Caves Park Reserve) [11]	263,221 Ha <small>4, 5</small>	0.4%
New Protected Wildlife Management Areas Protected since September 1999: [11 Whole, 14 Partial]	68,373 Ha <small>4, 5</small>	0.1%
New Protected Ecological Reserves since September 1999: (Little George Island Ecological Reserve, Shay Ecological Reserve, Brokenhead Ecological Reserve, Armit Meadows Ecological Reserve, Birch River Ecological Reserve) [5]	1,031 Ha <small>4, 5</small>	~
New Forest Act Protected Lands since September 1999: (Bell and Steeprock Canyons Protected Area) [1]	11,310 Ha <small>4, 5</small>	~
New Protected Private Lands since September 1999: (Tall Grass Prairie Preserve & Nature Conservancy Canada) [1]	4,118 Ha <small>4, 5</small>	~
TOTAL - New Protected Areas since September 1999:	347,304 Ha <small>4, 5</small>	0.5%
Renewed Protected Park Reserves since September 1999: (Amisk Park Reserve, East Paint Lake Park Reserve, Poplar River Park Reserve, Chitek Lake, Birch Island Park Reserve, Fisher Bay Park Reserve) [6]	1,067,555 Ha <small>4, 5</small>	1.6%
Expired Protection since September 1999: (Hudwin, Long Point Park Reserves) [2]	-260,700 Ha <small>4, 5</small>	-0.4%
Total Manitoba Protected Areas as of October 1, 2006:	5,336,675 Ha <small>1, 2, 3, 4, 5</small>	8.2%

Sources:

- 1) Statistics Canada
- 2) Federal Provincial Parks Council
- 3) WWF Canada
- 4) Manitoba Conservation
- 5) Manitoba Wildlands
- 6) National Round Table on the Environment and the Economy

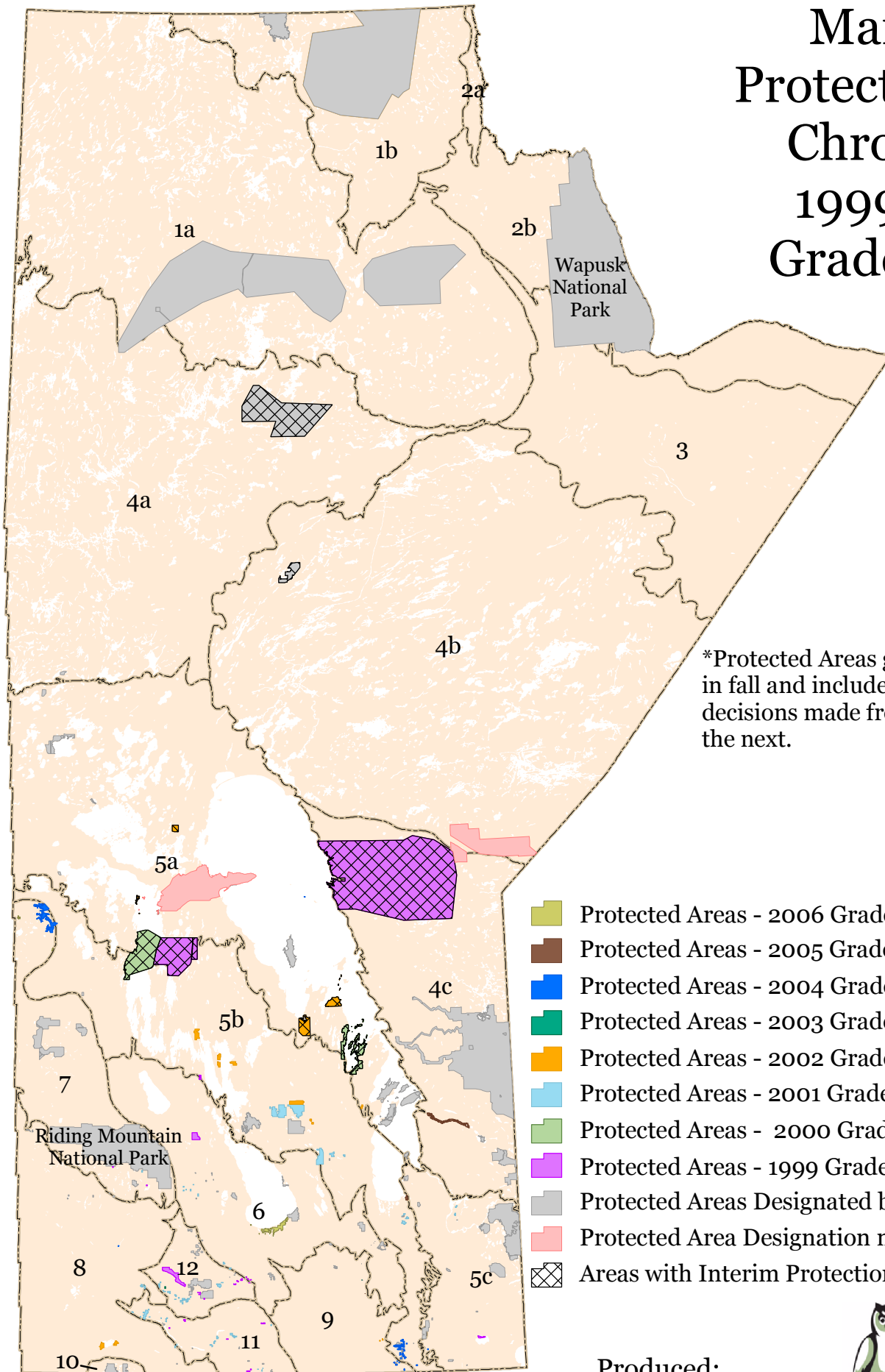
Manitoba's Public Policy indicates that a protected area is an area that is "closed by legal means to logging, mining, hydroelectric development, or any other activity that significantly and adversely affects habitat." The MB government continues to confirm its protected areas commitments and standards.





**MANITOBA
WILDLANDS.**

Total Area of Manitoba = 65 million Ha

Manitoba Protected Areas Chronology 1999-2006 Grade Years*



*Protected Areas grade is now issued in fall and includes protected areas decisions made from one year to the next.

-  Protected Areas - 2006 Grade Year (3 sites - 8,571ha)
-  Protected Areas - 2005 Grade Year
-  Protected Areas - 2004 Grade Year
-  Protected Areas - 2003 Grade Year (3 sites - 166ha)
-  Protected Areas - 2002 Grade Year
-  Protected Areas - 2001 Grade Year
-  Protected Areas - 2000 Grade Year
-  Protected Areas - 1999 Grade Year
-  Protected Areas Designated by Spring 1998
-  Protected Area Designation not Renewed
-  Areas with Interim Protection

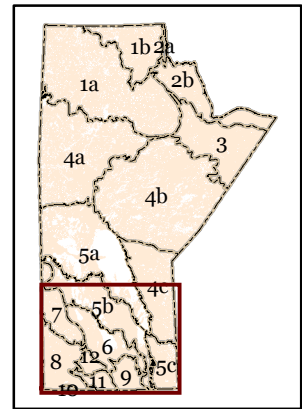
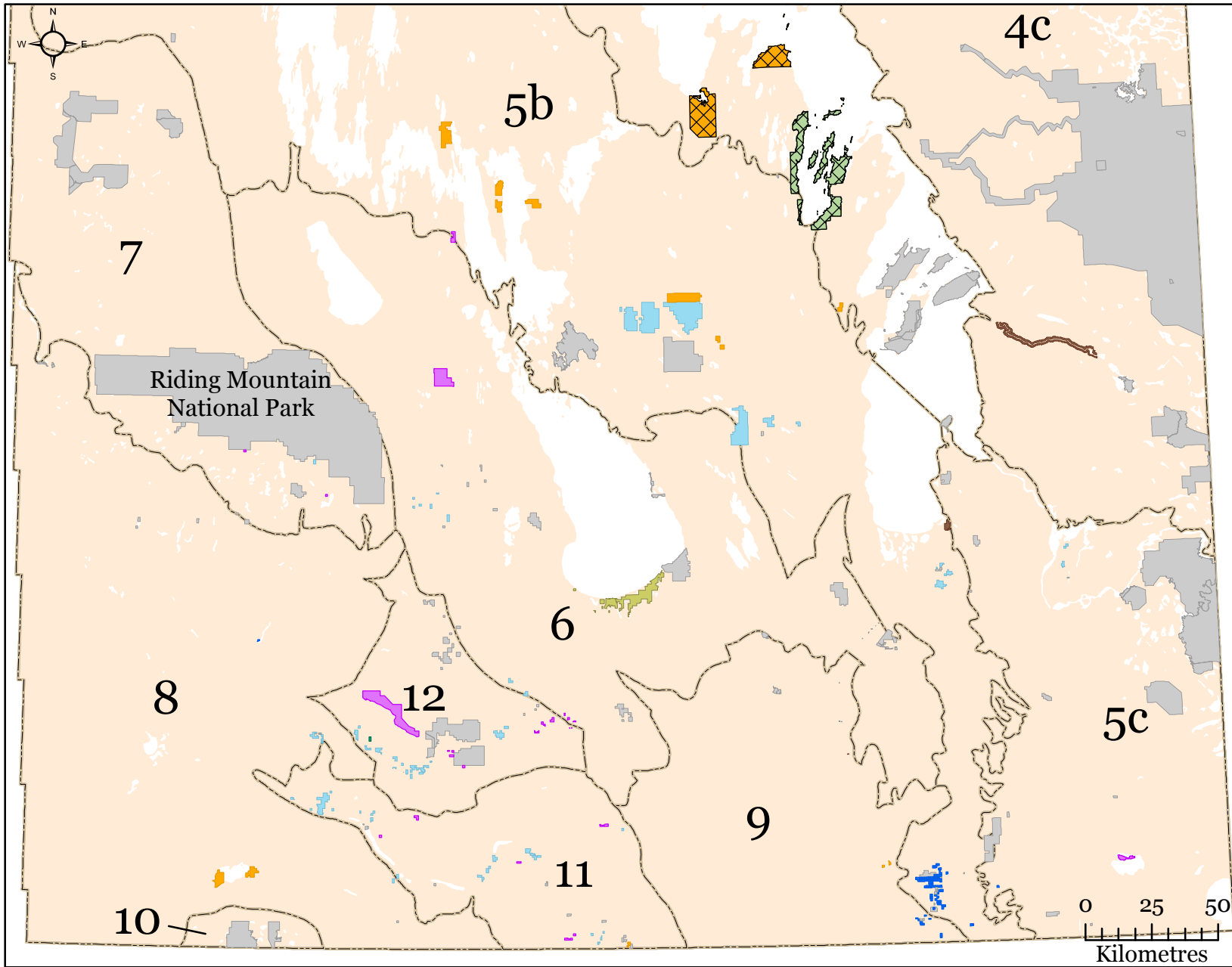
Map for Illustrative Purposes Only

Produced:
September 2006



MANITOBA
WILDLANDS.

Agro-Manitoba Protected Areas Chronology 1999-2006 Grade Years*



*Protected Areas grade is now issued in fall and includes protected areas decisions made from one year to the next.



Produced:
September 2006

- | | | |
|---|-----------------------------------|---|
| Protected Areas - 2006 Grade Year (3 sites - 8,571ha) | Protected Areas - 2002 Grade Year | Protected Areas Designated by Spring 1998 |
| Protected Areas - 2005 Grade Year | Protected Areas - 2001 Grade Year | Protected Area Designation not Renewed |
| Protected Areas - 2004 Grade Year | Protected Areas - 2000 Grade Year | Areas with Interim Protection |
| Protected Areas - 2003 Grade Year (3 sites - 166ha) | Protected Areas - 1999 Grade Year | |

Map for Illustrative Purposes Only

Manitoba Protected Areas Audit 2006 Chart

Legend:

Blue shaded column indicates if the area has had regulatory action since September 1999 YES - Protected; NO - Not Protected

Yellow shaded boxes indicate the area is a new protected area since September 1999

Pink shaded boxes indicate if the area has had protection renewed since September 1999

Purple shaded boxes indicate the area is a new park, but is not protected

Red shaded boxes indicate areas which do not have their crown mineral rights withdrawn

ASI#

Area of Special Interest Number used for mapping by participants in Manitoba's protected area consultations & tech-review. Designed by Manitoba Conservation.

Date of Regulation

When designation or regulation became law

Designation Period

Interim protection dates

Protection YES/NO

"In Manitoba, as a minimum, a 'protected' area must be closed by legal means to logging; mining; hydroelectric development, or any other activity that significantly and adversely affects the environment." (An Action Plan for Manitoba's Network of Protected Areas) *Heritage Rivers are not protected from development. Regulation is under the Act designating the land and Mines Act for withdrawal of crown mineral rights.

Designation Type

Park Reserve

Interim protection under Parks Act (Wilderness, Natural Park)

Provincial Park

Permanent protection & designation under Parks Act (Wilderness, Natural Park, Heritage)

Ecological Reserve

Permanent protection & designation under Ecological Reserves Act

Wildlife Management Area (WMA)

Designated under Wildlife Act, regulation added for those WMAs or WMA units protected from development.

Lands under Forest Act

Designated under Forest Act, regulation specifies protection from development, like WMAs

Private Lands

Designated through agreements, crown mineral rights withdrawn (Eg. Nature Conservancy, Manitoba Naturalist Society Lands)

L.U.C. (Land Use Categories) Parks Act * = Protected from development

Wilderness*

To protect representative or unique natural landscapes in an undisturbed state and provide recreational opportunities that depend on a pristine environment

Backcountry*

To protect examples of natural landscapes and provide basic facilities and trails for nature-oriented recreation in a largely undisturbed environment

Resource Management

To permit commercial resource development or extraction in a manner that does not compromise the main purpose of the park classification

Access

To provide a point or route of access in a provincial park for a road, transmission corridor, etc.

Recreational Development

To accommodate recreational development

Heritage*?

To protect a unique or representative site containing a resource or resources of cultural or heritage value (depends on site)

Act

Ecological Reserves
Forestry (using same language as under Wildlife Act)
Mines (for withdrawal of crown mineral rights)
Parks
Wildlife

Protection Type

Interim
Permanent

Action Since September 1999

Regulatory steps under Manitoba Acts, since September 1999

Natural Regions

Natural regions of Manitoba - Conservation Manitoba

Size (Hectares)

Protected
Other (area within designation NOT protected)

Crown Mineral Rights Withdrawn

Prospecting, other dispositions not available under Mines Act

Mining Rank One

Ranked and Ratified for protected status in Minerals Sector Protected Area Consultation

FN Nomination

Nominated for protection by a First Nation Community, under the First Nation Protected Areas MOU

Includes Water

May be rivers, lakes, or coastal areas included, LUC is usually Recreational Development where water is not protected. May also be within Parks Act LUC for protected status.

Sources:

- An Action Plan for Network of Protected Areas 1994, 1996, 1998, 2000
- "A System Plan for Manitoba's Provincial Parks"
- Ecological Reserves Act, regulation
- Manitoba Budget Papers 2002
- Manitoba Conservation - Parks Branch Data as of October 2005
- Manitoba Gazette
- Mining Sector Protected Areas Consultation ASI Ranking Summary Chart
- Manitoba Mines Act, Regulation
- Provincial Parks Act, regulation
- Wildlife Act, regulation
- WWF Canada ESC report 2000
- Manitoba Consolidated Regulations
- Manitoba Geological Survey Map Gallery
- Manitoba Forest Act Regulations
- Manitoba Lands Inventory
- WWF Canada -The Nature Audit, Setting Canada's Conservation Agenda for the 21st Century, Report No. 1 - 2003
- Securing Canada's Natural Capital: A Vision for Nature Conservation in the 21st Century By the National Round Table on the Environment and the Economy

Manitoba Protected Areas Audit, Spring 1999 to Fall 2006				Parks/Park Reserves					ALPHA								
Name	ASI #	Date of Regulation	Designation Period	Protected as of October 1, 2006	Designation Type	L.U.C.	Act	Regulation	Protection Type	Action since Sept. '99	Natural Regions	Size [Ha]		Crown Mineral Rights Withdrawn	Mining Rank One	FN Nom.	Comments (Representation) (Water)
												Protected	Other				
Amisk Provincial Park		(21-Dec-94) 10-Feb-95	-	YES	Provincial Park	Wilderness	Parks	17/95	Permanent	-	4A	198,000	-	YES	NO	NO	Old Parks Act
Amisk Park Reserve		28-Feb-97	February 28, 1997 to August 28, 1997	YES	Park Reserve	Wilderness	Parks	35/97	Interim	-	4A	198,000	-	YES	NO	NO	
Amisk Park Reserve		12-Sep-97	September 12, 1997 to September 12, 2002	YES	Park Reserve	Wilderness	Parks	35/97 amended by 177/97	Interim	-	4A	198,000	-	YES	NO	NO	
Amisk Park Reserve		-	DESIGNATION NOT RENEWED	NO	-	(Wilderness)	-	-	-	NO	4A	-	198,000	YES	NO	NO	Waiting for renewal / First Nation consent
Amisk Park Reserve		2-May-03	June 1, 2003 - May 31, 2008	YES	Park Reserve	Wilderness	Parks	66/99 amended by 87/2003	Interim	YES	4A	198,000	-	YES	NO	NO	
Birch Island Park Reserve		28-Apr-00	May 1, 2000 to October 31, 2000	YES	Park Reserve	Backcountry	Parks	66/99 amended by 49/2000	Interim	YES	5B & 5A	79,000	-	YES	YES	YES	
Birch Island Park Reserve		3-Nov-00	October 31, 2000 - October 31, 2005	YES	Park Reserve	Backcountry	Parks	66/99 amended by 148/2000	Interim	YES	5B & 5A	79,000	-	YES	YES	YES	First Nation Nomination
Birch Island Park Reserve		1-Nov-05	November 1, 2005 - October 31, 2010	YES	Park Reserve	Backcountry	Parks	66/99 amended by 161/2005	Interim	YES	5B & 5A	79,000	-	YES	YES	YES	First Nation Nomination 2nd 5-year Reg.
Caribou River Provincial Park		(21-Dec-94) 10-Feb-95	-	YES	Provincial Park	Wilderness	Parks	17/95	Permanent	-	1B	764,000	-	YES	NO	NO	Old Parks Act
Caribou River Park Reserve		28-Feb-97	February 28, 1997 to August 28, 1997	YES	Park Reserve	Wilderness	Parks	35/97	Interim	-	1B	764,000	-	YES	NO	NO	
Caribou River Park Reserve		12-Sep-97	September 12, 1997 to September 12, 2002	YES	Park Reserve	Wilderness	Parks	35/97 amended by 177/97	Interim	-	1B	764,000	-	YES	NO	NO	Sayisi Dene consent. This park reserve regulation was struck out on May 10, 2002 by Park Reserves Designation Regulation 73/2002.
Caribou River Provincial Park		10-May-02	-	YES	Provincial Park	Wilderness	Parks	37/97 amended by 72/2002	Permanent	YES	1B	764,000	-	YES	NO	NO	

Manitoba Protected Areas Audit, Spring 1999 to Fall 2006

Parks/Park Reserves

ALPHA

Name	ASI #	Date of Regulation	Designation Period	Protected as of October 1, 2006	Designation Type	L.U.C.	Act	Regulation	Protection Type	Action since Sept. '99	Natural Regions	Size [Ha]		Crown Mineral Rights Withdrawn	Mining Rank One	FN Nom.	Comments (Representation) (Water)
												Protected	Other				
Chitek Lake Park Reserve		26-Mar-99	April 1, 1999 to October 1, 1999	YES	Park Reserve	Backcountry, Access	Parks	66/99	Interim	-	5B & 5A	99,600	700	YES	YES	YES	
Chitek Lake Park Reserve		6-Dec-99	October 1, 1999 to October 1, 2004	YES	Park Reserve	Backcountry, Access	Parks	66/99 amended by 164/99	Interim	YES	5B & 5A	99,600	700	YES	YES	YES	First Nation Nomination
Chitek Lake Park Reserve		30-Sep-04	October 1, 2004 - September 30, 2009	Yes	Park Reserve	Backcountry, Access	Parks	66/99 amended by 182/2004	Interim	YES	5B & 5A	99,600	700	YES	YES	YES	First Nation Nomination 2nd 5-year Reg.
Criddle / Vane Homestead Park Reserve		18-Feb-03	March 1, 2003 to August 31, 2003	NO	Park Reserve	Heritage	Parks	66/99 amended by 40/2003	Interim	YES	12	-	132	NO	YES	NO	Mineral rights not withdrawn. This park reserve regulation was struck out on February 24, 2004 by Park Reserves Designation Regulation 32/2004.
Criddle / Vane Homestead Provincial Park		24-Feb-04	-	YES	Provincial Park	Heritage	Parks	66/99 amended by 33/2004	-	YES	12	132	-	YES	YES	NO	
Duff Roblin Park Reserve		14-May-99	June 1, 1999 to December 1, 1999	NO	Park Reserve	Recreational Development	Parks	66/99 amended by 90/99	-	-	6	-	19.24	NO	NO	NO	
Duff Roblin Park Reserve		17-Jan-00	December 1, 1999 to December 1, 2004	NO	Park Reserve	Recreational Development	Parks	66/99 amended by 8/2000	-	NO	6	-	19.24	NO	NO	NO	
Duff Roblin Park Reserve		1-Dec-04	December 1, 2004 to November 30, 2009	NO	Park Reserve	Heritage	Parks	66/99 amended by 213/2004	-	YES	6	19.24	-	YES	YES	NO	Mines Act Regulation 340/87 R amended by 163/2005
East Paint Lake Park Reserve		28-Feb-97	February 28, 1997 to August 28, 1997	YES	Park Reserve	Backcountry	Parks	35/97	Interim	-	4B	13,985	-	YES	NO	NO	
East Paint Lake Park Reserve		12-Sep-97	September 12, 1997 to September 12, 2002	YES	Park Reserve	Backcountry	Parks	35/97 amended by 177/97	Interim	-	4B	13,985	-	YES	NO	NO	
East Paint Lake Park Reserve		12-Sep-02	September 11, 2002 to September 10, 2007	YES	Park Reserve	Backcountry	Parks	66/99 amended by 152/2002	Interim	YES	4B	13,985	-	YES	NO	NO	2nd 5-year Reg.

Manitoba Protected Areas Audit, Spring 1999 to Fall 2006				Parks/Park Reserves					ALPHA								
Name	ASI #	Date of Regulation	Designation Period	Protected as of October 1, 2006	Designation Type	L.U.C.	Act	Regulation	Protection Type	Action since Sept. '99	Natural Regions	Size [Ha]		Crown Mineral Rights Withdrawn	Mining Rank One	FN Nom.	Comments (Representation) (Water)
												Protected	Other				
Fisher Bay Park Reserve		28-Apr-00	May 1, 2000 to October 31, 2000	YES	Park Reserve	Backcountry, Recreational Development	Parks	66/99 amended by 49/2000	Interim	YES	5B & 5A	28,200	61,000	YES	YES	YES	
Fisher Bay Park Reserve		3-Nov-00	October 31, 2000 - October 31, 2005	YES	Park Reserve	Backcountry, Recreational Development	Parks	66/99 amended by 148/2000	Interim	YES	5B & 5A	28,200	61,000	YES	YES	YES	First Nation Nomination
Fisher Bay Park Reserve		1-Nov-05	November 1, 2005 - October 31, 2010	YES	Park Reserve	Backcountry, Recreational Development	Parks	66/99 amended by 161/2005	Interim	YES	5B & 5A	28,200	61,000	YES	YES	YES	First Nation Nomination 2nd 5-yr Reg
Goose Island Park Reserve		18-May-01	June 1, 2001 to November 30, 2001	YES	Park Reserve	Backcountry	Parks	66/99 amended by 75/2001	Interim	YES	5A	145	-	YES	YES	NO	
Goose Island Park Reserve		7-Dec-01	December 15, 2001 to December 14, 2006	YES	Park Reserve	Backcountry	Parks	66/99 amended by 183/2001	Interim	YES	5A	145	-	YES	YES	NO	
Grand Island Park Reserve		18-May-01	June 1, 2001 to November 30, 2001	YES	Park Reserve	Backcountry	Parks	66/99 amended by 75/2001	Interim	YES	5A	915	-	YES	NO	YES	
Grand Island Park Reserve		7-Dec-01	December 15, 2001 to December 14, 2006	YES	Park Reserve	Backcountry	Parks	66/99 amended by 183/2001	Interim	YES	5A	915	-	YES	NO	YES	First Nation Nomination
Hudwin Lake Park Reserve	140	28-Apr-00	May 1, 2000 to October 31, 2000	YES	Park Reserve	Backcountry, Access	Parks	66/99 amended by 49/2000	Interim	YES	4B	128,700	-	YES	YES	NO	First Nation Nomination
Hudwin Lake Park Reserve	140	-	DESIGNATION NOT RENEWED	NO	ASI	(Backcountry, Access)	-	-	-	NO	4B	-	128,700	YES	YES	NO	First Nation concern, Mining Rank 1, Forestry Rank 1
Kinnow Bay Park Reserve	69	18-May-01	June 1, 2001 to November 30, 2001	YES	Park Reserve	Backcountry	Parks	66/99 amended by 75/2001	Interim	YES	5A	8,400	-	YES	YES	YES	
Kinnow Bay Park Reserve	69	7-Dec-01	December 15, 2001 to December 14, 2006	YES	Park Reserve	Backcountry	Parks	66/99 amended by 183/2001	Interim	YES	5A	8,400	-	YES	YES	YES	First Nation Nomination

Manitoba Protected Areas Audit, Spring 1999 to Fall 2006				Parks/Park Reserves						ALPHA							
Name	ASI #	Date of Regulation	Designation Period	Protected as of October 1, 2006	Designation Type	L.U.C.	Act	Regulation	Protection Type	Action since Sept.'99	Natural Regions	Size [Ha]		Crown Mineral Rights Withdrawn	Mining Rank One	FN Nom.	Comments (Representation) (Water)
												Protected	Other				
Long Point Park Reserve	81	16-Apr-99	April 15, 1999 to October 15, 1999	YES	Park Reserve	Backcountry, Access, Recreational Development	Parks	66/99 amended by 71/99	Interim	YES	5A	132,000	-	NO	YES	NO	
Long Point Park Reserve	81	-	DESIGNATION NOT RENEWED	NO	ASI	(Backcountry, Access, Recreational Development)	-	-	-	NO	5A	-	132,000	NO	YES	NO	No First Nation consent, Not in 1999 Grade
Manigotagan River Park Reserve		28-Feb-97	February 28, 1997 to August 28, 1997	NO	Park Reserve	Recreational Development	Parks	35/97	-	-	4C	0	2,875	NO	NO	NO	Old Parks Act
Manigotagan River Park Reserve		12-Sep-97	September 12, 1997 to September 12, 2002	NO	Park Reserve	Recreational Development	Parks	35/97 amended by 177/97	-	-	4C	0	2,875	NO	NO	NO	
Manigotagan River Park Reserve		12-Sep-02	September 11, 2002 to September 10, 2007	NO	Park Reserve	Recreational Development	Parks	66/99 amended by 152/2002	-	NO	4C	0	2,875	NO	NO	NO	2nd 5-year Reg.
Manigotagan River Provincial Park	145	1-Dec-04		YES	Provincial Park	Backcountry, Recreational Development	Parks	37/97 amended by 215/2004	-	YES	4C	7,432	-	YES	NO	NO	Mines Act Regulation on 163/2005 on November 1, 2005
Pelican Islands Park Reserve		18-May-01	June 1, 2001 to November 30, 2001	YES	Park Reserve	Backcountry	Parks	66/99 amended by 75/2001	Interim	YES	5A	130	-	YES	NO	NO	
Pelican Islands Park Reserve		7-Dec-01	December 15, 2001 to December 14, 2006	YES	Park Reserve	Backcountry	Parks	66/99 amended by 183/2001	Interim	YES	5A	130	-	YES	NO	NO	
Pembina Valley Provincial Park		1-Oct-01	-	YES	Provincial Park	Backcountry, Recreational Development	Parks	151/2001	Permanent	YES	11	171	7	YES	NO	NO	
Pemmican Island Park Reserve		18-May-01	June 1, 2001 to November 30, 2001	YES	Park Reserve	Backcountry	Parks	66/99 amended by 75/2001	Interim	YES	5A	22	-	YES	YES	NO	
Pemmican Island Park Reserve		7-Dec-01	December 15, 2001 to December 14, 2006	YES	Park Reserve	Backcountry	Parks	66/99 amended by 183/2001	Interim	YES	5A	22	-	YES	YES	NO	
Poplar/Nanowin Rivers Park Reserve		26-Mar-99	April 1, 1999 to October 1, 1999	YES	Park Reserve	Backcountry, Recreational Development	Parks	66/99	Interim	-	4C	748,370	28,900	YES	YES	YES	
Poplar/Nanowin Rivers Park Reserve		6-Dec-99	October 1, 1999 to October 1, 2004	YES	Park Reserve	Backcountry, Recreational Development	Parks	66/99 amended by 164/99	Interim	YES	4C	748,370	28,900	YES	YES	YES	First Nation Nomination
Poplar/Nanowin Rivers Park Reserve		14-Jun-04	October 1, 2004 to September 30, 2009	YES	Park Reserve	Backcountry, Recreational Development	Parks	66/99 amended by 115/2004	Interim	YES	4C	748,370	28,900	YES	YES	YES	First Nation Nomination 2nd 5-year Reg.

Manitoba Protected Areas Audit, Spring 1999 to Fall 2006

Parks/Park Reserves

ALPHA

Name	ASI #	Date of Regulation	Designation Period	Protected as of October 1, 2006	Designation Type	L.U.C.	Act	Regulation	Protection Type	Action since Sept. '99	Natural Regions	Size [Ha]		Crown Mineral Rights Withdrawn	Mining Rank One	FN Nom.	Comments (Representation) (Water)
												Protected	Other				
Rivers Provincial Park		14-Jun-04	-	YES	Provincial Park	Backcountry, Recreational Development	Parks	37/97 amended by 116/2004	Permanent	YES	8	49	38	YES	NO	NO	new land use category of backcountry
South Atikaki Park Reserve		28-Feb-97	February 28, 1997 to August 28, 1997	NO	Park Reserve	Not categorized	Parks	35/97	-	-	4C	-	13,795	NO	NO	NO	Old Parks Act
South Atikaki Park Reserve		12-Sep-97	September 12, 1997 to September 12, 2002	NO	Park Reserve	Not categorized	Parks	35/97 amended by 177/97	-	-	4C	-	13,795	NO	NO	NO	
South Atikaki Park Reserve		-	DESIGNATION NOT RENEWED	NO	-	-	-	-	-	NO	4C	-	13,795	NO	NO	NO	Consultation extended 2002 - 2003
South Atikaki Provincial Park		15-Apr-03	-	NO	Provincial Park	Recreational Devel, Resource Management	Parks	37/97 amended by 75/2003	-	YES	0	-	13,795	NO	NO	NO	
South Atikaki Provincial Park		17-Jul-03	-	NO	Provincial Park	Recreational Devel, Resource Management	Parks	141/96 amended by 111/2003	-	YES	4C	-	13,795	NO	NO	NO	Provincial Parks Act: Park Activities Regulation - Prohibition of Logging
Sturgeon Bay Park Reserve	68	18-May-01	June 1, 2001 to November 30, 2001	YES	Park Reserve	Backcountry	Parks	66/99 amended by 75/2001	Interim	YES	5A	14,490	-	YES	YES	YES	
Sturgeon Bay Park Reserve	68	7-Dec-01	December 15, 2001 to December 14, 2006	YES	Park Reserve	Backcountry	Parks	66/99 amended by 183/2001	Interim	YES	5A	14,490	-	YES	YES	YES	First Nation Nomination
Trappist Monastery Park Reserve		28-Feb-97	February 28, 1997 to August 28, 1997	YES	Heritage Park	Heritage	Parks	35/97	Interim	YES	9	2	-	YES	YES	NO	Old Parks Act
Trappist Monastery Park Reserve		12-Sep-97	September 12, 1997 to September 12, 2002	YES	Heritage Park	Heritage	Parks	35/97 amended by 177/97	Interim	YES	9	2	-	YES	YES	NO	This park reserve regulation was struck out on September 23, 2002 by Park Reserves Designation Regulation 160/2002.
Trappist Monastery Heritage Park		23-Sep-02	-	YES	Heritage Park	Heritage	Parks	37/97 amended by 161/2002	Permanent	YES	9	2	-	YES	YES	NO	Not Zoned, buildings
Walter Cook Uplands Caves Park Reserve	88	17-Jul-01	August 1, 2001 to January 31, 2002	YES	Park Reserve	Backcountry	Parks	66/99 amended by 115/2001	Interim	YES	5A	3,200	-	YES	YES	NO	
Walter Cook Uplands Caves Park Reserve	88	11-Mar-02	March 15, 2002 to March 14, 2007	YES	Park Reserve	Backcountry	Parks	66/99 amended by 42/2002	Interim	YES	5A	3,200	-	YES	YES	NO	First Nation Consent

Manitoba Protected Areas Audit, Spring 1999 to Fall 2006

Parks/Park Reserves

CHRONO

Name	ASI #	Date of Regulation	Designation Period	Protected as of October 1, 2006	Designation Type	L.U.C.	Act	Regulation	Protection Type	Action since Sept.'99	Natural Regions	Size [Ha]		Crown Mineral Rights Withdrawn	Mining Rank One	FN Nom.	Comments (Representation) (Water)
												Protected	Other				
Amisk Provincial Park		(21-Dec-94) 10-Feb-95	-	YES	Provincial Park	Wilderness	Parks	17/95	Permanent	-	4A	198,000	-	YES	NO	NO	Old Parks Act
Caribou River Provincial Park		(21-Dec-94) 10-Feb-95	-	YES	Provincial Park	Wilderness	Parks	17/95	Permanent	-	1B	764,000	-	YES	NO	NO	Old Parks Act
Amisk Park Reserve		28-Feb-97	February 28, 1997 to August 28, 1997	YES	Park Reserve	Wilderness	Parks	35/97	Interim	-	4A	198,000	-	YES	NO	NO	
Caribou River Park Reserve		28-Feb-97	February 28, 1997 to August 28, 1997	YES	Park Reserve	Wilderness	Parks	35/97	Interim	-	1B	764,000	-	YES	NO	NO	
East Paint Lake Park Reserve		28-Feb-97	February 28, 1997 to August 28, 1997	YES	Park Reserve	Backcountry	Parks	35/97	Interim	-	4B	13,985	-	YES	NO	NO	
Manitotagan River Park Reserve		28-Feb-97	February 28, 1997 to August 28, 1997	NO	Park Reserve	Recreational Development	Parks	35/97	-	-	4C	0	2,875	NO	NO	NO	Old Parks Act
South Atikaki Park Reserve		28-Feb-97	February 28, 1997 to August 28, 1997	NO	Park Reserve	Not categorized	Parks	35/97	-	-	4C	-	13,795	NO	NO	NO	Old Parks Act
Trappist Monastery Park Reserve		28-Feb-97	February 28, 1997 to August 28, 1997	YES	Heritage Park	Heritage	Parks	35/97	Interim	YES	9	2	-	YES	YES	NO	Old Parks Act
Amisk Park Reserve		12-Sep-97	September 12, 1997 to September 12, 2002	YES	Park Reserve	Wilderness	Parks	35/97 amended by 177/97	Interim	-	4A	198,000	-	YES	NO	NO	
Caribou River Park Reserve		12-Sep-97	September 12, 1997 to September 12, 2002	YES	Park Reserve	Wilderness	Parks	35/97 amended by 177/97	Interim	-	1B	764,000	-	YES	NO	NO	Sayisi Dene consent. This park reserve regulation was struck out on May 10, 2002 by Park Reserves Designation Regulation 73/2002.
East Paint Lake Park Reserve		12-Sep-97	September 12, 1997 to September 12, 2002	YES	Park Reserve	Backcountry	Parks	35/97 amended by 177/97	Interim	-	4B	13,985	-	YES	NO	NO	
Manitotagan River Park Reserve		12-Sep-97	September 12, 1997 to September 12, 2002	NO	Park Reserve	Recreational Development	Parks	35/97 amended by 177/97	-	-	4C	0	2,875	NO	NO	NO	

Manitoba Protected Areas Audit, Spring 1999 to Fall 2006

Parks/Park Reserves

CHRONO

Name	ASI #	Date of Regulation	Designation Period	Protected as of October 1, 2006	Designation Type	L.U.C.	Act	Regulation	Protection Type	Action since Sept.'99	Natural Regions	Size [Ha]		Crown Mineral Rights Withdrawn	Mining Rank One	FN Nom.	Comments (Representation) (Water)
												Protected	Other				
South Atikaki Park Reserve		12-Sep-97	September 12, 1997 to September 12, 2002	NO	Park Reserve	Not categorized	Parks	35/97 amended by 177/97	-	-	4C	-	13,795	NO	NO	NO	
Trappist Monastery Park Reserve		12-Sep-97	September 12, 1997 to September 12, 2002	YES	Heritage Park	Heritage	Parks	35/97 amended by 177/97	Interim	YES	9	2	-	YES	YES	NO	This park reserve regulation was struck out on September 23, 2002 by Park Reserves Designation Regulation 160/2002.
Chitek Lake Park Reserve		26-Mar-99	April 1, 1999 to October 1, 1999	YES	Park Reserve	Backcountry, Access	Parks	66/99	Interim	-	5B & 5A	99,600	700	YES	YES	YES	
Poplar/Nanowin Rivers Park Reserve		26-Mar-99	April 1, 1999 to October 1, 1999	YES	Park Reserve	Backcountry, Recreational Development	Parks	66/99	Interim	-	4C	748,370	28,900	YES	YES	YES	
Long Point Park Reserve	81	16-Apr-99	April 15, 1999 to October 15, 1999	YES	Park Reserve	Backcountry, Access, Recreational Development	Parks	66/99 amended by 71/99	Interim	YES	5A	132,000	-	NO	YES	NO	
Duff Roblin Park Reserve		14-May-99	June 1, 1999 to December 1, 1999	NO	Park Reserve	Recreational Development	Parks	66/99 amended by 90/99	-	-	6	-	19.24	NO	NO	NO	
Chitek Lake Park Reserve		6-Dec-99	October 1, 1999 to October 1, 2004	YES	Park Reserve	Backcountry, Access	Parks	66/99 amended by 164/99	Interim	YES	5B & 5A	99,600	700	YES	YES	YES	First Nation Nomination
Poplar/Nanowin Rivers Park Reserve		6-Dec-99	October 1, 1999 to October 1, 2004	YES	Park Reserve	Backcountry, Recreational Development	Parks	66/99 amended by 164/99	Interim	YES	4C	748,370	28,900	YES	YES	YES	First Nation Nomination
Duff Roblin Park Reserve		17-Jan-00	December 1, 1999 to December 1, 2004	NO	Park Reserve	Recreational Development	Parks	66/99 amended by 8/2000	-	NO	6	-	19.24	NO	NO	NO	
Birch Island Park Reserve		28-Apr-00	May 1, 2000 to October 31, 2000	YES	Park Reserve	Backcountry	Parks	66/99 amended by 49/2000	Interim	YES	5B & 5A	79,000	-	YES	YES	YES	
Fisher Bay Park Reserve		28-Apr-00	May 1, 2000 to October 31, 2000	YES	Park Reserve	Backcountry, Recreational Development	Parks	66/99 amended by 49/2000	Interim	YES	5B & 5A	28,200	61,000	YES	YES	YES	
Hudwin Lake Park Reserve	140	28-Apr-00	May 1, 2000 to October 31, 2000	YES	Park Reserve	Backcountry, Access	Parks	66/99 amended by 49/2000	Interim	YES	4B	128,700	-	YES	YES	NO	First Nation Nomination

Manitoba Protected Areas Audit, Spring 1999 to Fall 2006

Parks/Park Reserves

CHRONO

Name	ASI #	Date of Regulation	Designation Period	Protected as of October 1, 2006	Designation Type	L.U.C.	Act	Regulation	Protection Type	Action since Sept.'99	Natural Regions	Size [Ha]		Crown Mineral Rights Withdrawn	Mining Rank One	FN Nom.	Comments (Representation) (Water)
												Protected	Other				
Birch Island Park Reserve		3-Nov-00	October 31, 2000 - October 31, 2005	YES	Park Reserve	Backcountry	Parks	66/99 amended by 148/2000	Interim	YES	5B & 5A	79,000	-	YES	YES	YES	First Nation Nomination
Fisher Bay Park Reserve		3-Nov-00	October 31, 2000 - October 31, 2005	YES	Park Reserve	Backcountry, Recreational Development	Parks	66/99 amended by 148/2000	Interim	YES	5B & 5A	28,200	61,000	YES	YES	YES	First Nation Nomination
Goose Island Park Reserve		18-May-01	June 1, 2001 to November 30, 2001	YES	Park Reserve	Backcountry	Parks	66/99 amended by 75/2001	Interim	YES	5A	145	-	YES	YES	NO	
Grand Island Park Reserve		18-May-01	June 1, 2001 to November 30, 2001	YES	Park Reserve	Backcountry	Parks	66/99 amended by 75/2001	Interim	YES	5A	915	-	YES	NO	YES	
Kinnow Bay Park Reserve	69	18-May-01	June 1, 2001 to November 30, 2001	YES	Park Reserve	Backcountry	Parks	66/99 amended by 75/2001	Interim	YES	5A	8,400	-	YES	YES	YES	
Pelican Islands Park Reserve		18-May-01	June 1, 2001 to November 30, 2001	YES	Park Reserve	Backcountry	Parks	66/99 amended by 75/2001	Interim	YES	5A	130	-	YES	NO	NO	
Pemmican Island Park Reserve		18-May-01	June 1, 2001 to November 30, 2001	YES	Park Reserve	Backcountry	Parks	66/99 amended by 75/2001	Interim	YES	5A	22	-	YES	YES	NO	
Sturgeon Bay Park Reserve	68	18-May-01	June 1, 2001 to November 30, 2001	YES	Park Reserve	Backcountry	Parks	66/99 amended by 75/2001	Interim	YES	5A	14,490	-	YES	YES	YES	
Walter Cook Uplands Caves Park Reserve	88	17-Jul-01	August 1, 2001 to January 31, 2002	YES	Park Reserve	Backcountry	Parks	66/99 amended by 115/2001	Interim	YES	5A	3,200	-	YES	YES	NO	
Pembina Valley Provincial Park		1-Oct-01	-	YES	Provincial Park	Backcountry, Recreational Development	Parks	151/2001	Permanent	YES	11	171	7	YES	NO	NO	
Goose Island Park Reserve		7-Dec-01	December 15, 2001 to December 14, 2006	YES	Park Reserve	Backcountry	Parks	66/99 amended by 183/2001	Interim	YES	5A	145	-	YES	YES	NO	
Grand Island Park Reserve		7-Dec-01	December 15, 2001 to December 14, 2006	YES	Park Reserve	Backcountry	Parks	66/99 amended by 183/2001	Interim	YES	5A	915	-	YES	NO	YES	First Nation Nomination

Manitoba Protected Areas Audit, Spring 1999 to Fall 2006

Parks/Park Reserves

CHRONO

Name	ASI #	Date of Regulation	Designation Period	Protected as of October 1, 2006	Designation Type	L.U.C.	Act	Regulation	Protection Type	Action since Sept. '99	Natural Regions	Size [Ha]		Crown Mineral Rights Withdrawn	Mining Rank One	FN Nom.	Comments (Representation) (Water)
												Protected	Other				
Kinwow Bay Park Reserve	69	7-Dec-01	December 15, 2001 to December 14, 2006	YES	Park Reserve	Backcountry	Parks	66/99 amended by 183/2001	Interim	YES	5A	8,400	-	YES	YES	YES	First Nation Nomination
Pelican Islands Park Reserve		7-Dec-01	December 15, 2001 to December 14, 2006	YES	Park Reserve	Backcountry	Parks	66/99 amended by 183/2001	Interim	YES	5A	130	-	YES	NO	NO	
Pemmican Island Park Reserve		7-Dec-01	December 15, 2001 to December 14, 2006	YES	Park Reserve	Backcountry	Parks	66/99 amended by 183/2001	Interim	YES	5A	22	-	YES	YES	NO	
Sturgeon Bay Park Reserve	68	7-Dec-01	December 15, 2001 to December 14, 2006	YES	Park Reserve	Backcountry	Parks	66/99 amended by 183/2001	Interim	YES	5A	14,490	-	YES	YES	YES	First Nation Nomination
Walter Cook Uplands Caves Park Reserve	88	11-Mar-02	March 15, 2002 to March 14, 2007	YES	Park Reserve	Backcountry	Parks	66/99 amended by 42/2002	Interim	YES	5A	3,200	-	YES	YES	NO	First Nation Consent
Caribou River Provincial Park		10-May-02	-	YES	Provincial Park	Wilderness	Parks	37/97 amended by 72/2002	Permanent	YES	1B	764,000	-	YES	NO	NO	
East Paint Lake Park Reserve		12-Sep-02	September 11, 2002 to September 10, 2007	YES	Park Reserve	Backcountry	Parks	66/99 amended by 152/2002	Interim	YES	4B	13,985	-	YES	NO	NO	2nd 5-year Reg.
Manigotagan River Park Reserve		12-Sep-02	September 11, 2002 to September 10, 2007	NO	Park Reserve	Recreational Development	Parks	66/99 amended by 152/2002	-	NO	4C	0	2,875	NO	NO	NO	2nd 5-year Reg.
Trappist Monastery Heritage Park		23-Sep-02	-	YES	Heritage Park	Heritage	Parks	37/97 amended by 161/2002	Permanent	YES	9	2	-	YES	YES	NO	Not Zoned, buildings
Criddle / Vane Homestead Park Reserve		18-Feb-03	March 1, 2003 to August 31, 2003	NO	Park Reserve	Heritage	Parks	66/99 amended by 40/2003	Interim	YES	12	-	132	NO	YES	NO	Mineral rights not withdrawn. This park reserve regulation was struck out on February 24, 2004 by Park Reserves Designation Regulation 32/2004.
South Atikaki Provincial Park		15-Apr-03	-	NO	Provincial Park	Recreational Devel, Resource Management	Parks	37/97 amended by 75/2003	-	YES	0	-	13,795	NO	NO	NO	

Manitoba Protected Areas Audit, Spring 1999 to Fall 2006

Parks/Park Reserves

CHRONO

Name	ASI #	Date of Regulation	Designation Period	Protected as of October 1, 2006	Designation Type	L.U.C.	Act	Regulation	Protection Type	Action since Sept.'99	Natural Regions	Size [Ha]		Crown Mineral Rights Withdrawn	Mining Rank One	FN Nom.	Comments (Representation) (Water)
												Protected	Other				
Amisk Park Reserve		2-May-03	June 1, 2003 - May 31, 2008	YES	Park Reserve	Wilderness	Parks	66/99 amended by 87/2003	Interim	YES	4A	198,000	-	YES	NO	NO	
South Atikaki Provincial Park		17-Jul-03	-	NO	Provincial Park	Recreational Devel, Resource Management	Parks	141/96 amended by 111/2003	-	YES	4C	-	13,795	NO	NO	NO	Provincial Parks Act: Park Activities Regulation - Prohibition of Logging
Criddle / Vane Homestead Provincial Park		24-Feb-04	-	YES	Provincial Park	Heritage	Parks	66/99 amended by 33/2004	-	YES	12	132	-	YES	YES	NO	
Poplar/Nanowin Rivers Park Reserve		14-Jun-04	October 1, 2004 to September 30, 2009	YES	Park Reserve	Backcountry, Recreational Development	Parks	66/99 amended by 115/2004	Interim	YES	4C	748,370	28,900	YES	YES	YES	First Nation Nomination 2nd 5-year Reg.
Rivers Provincial Park		14-Jun-04	-	YES	Provincial Park	Backcountry, Recreational Development	Parks	37/97 amended by 116/2004	Permanent	YES	8	49	38	YES	NO	NO	new land use category of backcountry
Chitek Lake Park Reserve		30-Sep-04	October 1, 2004 - September 30, 2009	Yes	Park Reserve	Backcountry, Access	Parks	66/99 amended by 182/2004	Interim	YES	5B & 5A	99,600	700	YES	YES	YES	First Nation Nomination 2nd 5-year Reg.
Duff Roblin Park Reserve		1-Dec-04	December 1, 2004 to November 30, 2009	NO	Park Reserve	Heritage	Parks	66/99 amended by 213/2004	-	YES	6	19,24	-	YES	YES	NO	Mines Act Regulation 340/87 R amended by 163/2005
Manigotagan River Provincial Park	145	1-Dec-04		YES	Provincial Park	Backcountry, Recreational Development	Parks	37/97 amended by 215/2004	-	YES	4C	7,432	-	YES	NO	NO	Mines Act Regulation on 163/2005 on November 1, 2005
Birch Island Park Reserve		1-Nov-05	November 1, 2005 - October 31, 2010	YES	Park Reserve	Backcountry	Parks	66/99 amended by 161/2005	Interim	YES	5B & 5A	79,000	-	YES	YES	YES	First Nation Nomination 2nd 5-year Reg.
Fisher Bay Park Reserve		1-Nov-05	November 1, 2005 - October 31, 2010	YES	Park Reserve	Backcountry, Recreational Development	Parks	66/99 amended by 161/2005	Interim	YES	5B & 5A	28,200	61,000	YES	YES	YES	First Nation Nomination 2nd 5-yr Reg
Hudwin Lake Park Reserve	140	-	DESIGNATION NOT RENEWED	NO	ASI	(Backcountry, Access)	-	-	-	NO	4B	-	128,700	YES	YES	NO	First Nation concern, Mining Rank 1, Forestry Rank 1
Long Point Park Reserve	81	-	DESIGNATION NOT RENEWED	NO	ASI	(Backcountry, Access, Recreational Development)	-	-	-	NO	5A	-	132,000	NO	YES	NO	No First Nation consent, Not in 1999 Grade

Manitoba Protected Areas Audit, Spring 1999 to Fall 2006

WMAs

ALPHA

Name	ASI #	Date of Regulation	Designation Period	Protected as of October 1, 2006	Designation Type	L.U.C.	Act	Regulation	Action since Sept. '99	Natural Regions	Size [Ha]		Crown Mineral Rights Withdrawn	Mining Rank One	FN Nom.	Comments (Representation) (Water)
											Protected	Other				
Alonsa WMA		26-Apr-99	-	YES	WMA	-	Wildlife	77/99	NO	6	3,893	-	YES	NO	NO	Township 22, Range 13 West and being Sections 19 to 22 inclusive, W half of Section 23, Sections 27-33 inclusive, and in Township 23, Range 13 West and being the W half of Section 3, Sections 4 and 5 and the E half of Section 6
Assiniboine Corridor WMA		1-May-00	-	YES	WMA	-	Wildlife	52/2000	YES	12	3,346	-	YES	NO	NO	
Brandon Hills WMA		1-May-00	-	YES	WMA	-	Wildlife	52/2000	YES	8	723	-	YES	NO	NO	
Broad Valley WMA	55	28-Jul-01	-	YES	WMA	-	Wildlife	114/2001	YES	5B	599	-	YES	YES	NO	Township 23, Range 2 West and being Section 31. Township 24, Range 3 West and being the NE quarter of Section 1 & 12
Cayer WMA		26-Apr-99	-	YES	WMA	-	Wildlife	77/99	NO	5B, 6	523	-	YES	NO	NO	Township 28, Range 13 West and being the W half of Section 13, E half of Section 14, N half of Section 23, W half of section 24, SW quarter Section 25 and the S half of Section 26
Deerwood		26-Apr-99	-	YES	WMA	-	Wildlife	77/99	NO	11	260	-	YES	NO	NO	All excluding: SW quarter if Section 24 in Township 5, Range 7 West
Delta Marsh WMA		20-Jun-06	-	YES	WMA	-	Wildlife	125/2006 and 129/2006	YES	6	8,125	-	YES	YES	NO	
Harrison WMA	30	28-Jul-01	-	NO	WMA	-	Wildlife	114/2001	YES	7	-	64	NO	YES	NO	crown mineral rights NOT withdrawn
Hilbre WMA	63	28-Jul-01	-	YES	WMA	-	Wildlife	114/2001	YES	5B	1,041	-	YES	YES	NO	
Hilltop Wildlife Management Area		20-Jun-06	-	NO	WMA	-	Wildlife	125/2006	NO	7	-	130	NO			WMA regulation in place, no protection standards, no crown mineral rights withdrawn. June 2006 announcement referred to site being protected
Lauder Sandhills WMA		1-May-00	-	YES	WMA	-	Wildlife	52/2000	YES	8	3,145	-	YES	NO	NO	
Lee River WMA		1-May-00	-	YES	WMA	-	Wildlife	52/2000	YES	5C	334	-	YES	YES	NO	Township 15, Range 11 East and being the SE quarter of Section 24, NE quarter of Section 13, E half of the NW quarter of legal subdivision 2 in Section 13. Township 16, Range 12 East and being the NW quarter of Section 6 & SE quarter of Section 7

Manitoba Protected Areas Audit, Spring 1999 to Fall 2006					WMAs				ALPHA							Comments (Representation) (Water)
Name	ASI #	Date of Regulation	Designation Period	Protected as of October 1, 2006	Designation Type	L.U.C.	Act	Regulation	Action since Sept.'99	Natural Regions	Size [Ha]		Crown Mineral Rights Withdrawn	Mining Rank One	FN Nom.	
											Protected	Other				
Little Birch WMA		1-May-00	-	YES	WMA	-	Wildlife	52/2000	YES	5B	21,000	-	YES	YES	NO	Township 24, Range 4 West and being the N half of Section 13 & S half of Section 24. Township 24, Range 6 West and being the NW quarter of Section 24 & the W half of Section 25. Township 25, Range 6 West and being the W half of Section 13, 25, 26, & E half of Section 35 & 36
Mantagao WMA	131	28-Jul-01	-	YES	WMA	-	Wildlife	114/2001	YES	5B	4,051	-	YES	YES	NO	Township 25, Range 3 West and being the W half of Section 29, Sections 30 & 31 and the SE quarter and W half of Section 32. Township 25, Range 4 West and being Sections 25 to 36
Mars Hill WMA		1-May-00	-	YES	WMA	-	Wildlife	52/2000	YES	5B	1,280	-	YES	NO	NO	Township 14, Range 7 East and being the N half of Section 19, N half of the N half of the SW quarter, the NW quarter & the E half of Section 20, legal subdivision 15 & the NW quarter of Section 21, the S half of the N half & S half of Section 29, & the E half of Section 30
Narcisse WMA		1-May-00	-	YES	WMA	-	Wildlife	52/2000	YES	5B & 6	7,990	-	YES	YES	NO	Township 20, Range 1 West and being the W half of Section 22. Township 20, Range 1 West and being the E half of Section 35, and the W half & the SE quarter of Section 36. Township 20, Range 2 West and being Sections 1 & 2, Sections 9 to 16, the S half & NE quarter of Section 21, Sections 22 to 27, the S half & NE quarter of Section 34, & Sections 35, 36. Township 21, Range 1 West and being W half & NE quarter of Section 1 & 2, the W half of Section 3 & SE quarter of Section 12. Township 21, Range 2 West and being Sections 1, 2, 11, 12, the W half & SE quarter of Section 13 & 14, the SE quarter of Section 21, the S half of Section 22 & 23. Township 20, Range 1 East and being the N half and SE quarter of Section 36.
Onanole WMA		1-May-00	-	YES	WMA	-	Wildlife	52/2000	YES	7	126	-	YES	NO	NO	Township 19, Range 18 West and being the E half of Section 21
Onanole WMA Addition		-	-	NO	-	-	-	-	NO	7	-	256	NO	NO	NO	WMA addition announced in June 2006, but there is no Wildlife Act or Mines Act regulation.
Otter Lake WMA		26-Apr-99	-	YES	WMA	-	Wildlife	77/99	NO	7	67	-	YES	NO	NO	
Parkland WMA - Horod Unit		26-Apr-99	-	YES	WMA	-	Wildlife	77/99	NO	7	194	-	YES	NO	NO	

Manitoba Protected Areas Audit, Spring 1999 to Fall 2006

WMAs

ALPHA

Name	ASI #	Date of Regulation	Designation Period	Protected as of October 1, 2006	Designation Type	L.U.C.	Act	Regulation	Action since Sept.'99	Natural Regions	Size [Ha]		Crown Mineral Rights Withdrawn	Mining Rank One	FN Nom.	Comments (Representation) (Water)
											Protected	Other				
Parkland WMA - Snake Creek Unit		1-May-00	-	YES	WMA	-	Wildlife	52/2000	YES	7	129	-	YES	NO	NO	
Pembina Valley WMA - Snowflake Unit		26-Apr-99	-	YES	WMA	-	Wildlife	77/99	NO	11	272	-	YES	NO	NO	
Pembina Valley WMA - Wood Bay Unit		26-Apr-99	-	YES	WMA	-	Wildlife	77/99	NO	11	64	-	YES	NO	NO	
Pembina Valley WMA - Floral Unit		1-May-00	-	YES	WMA	-	Wildlife	52/2000	YES	11	287	-	YES	NO	NO	Excluding Township 4, Range 12 West, the S half of legal subdivision 1 and the SE quarter of subdivision 2 in Section 13
Pembina Valley WMA - Grassy Lake Unit		1-May-00	-	YES	WMA	-	Wildlife	52/2000	YES	11	711	-	YES	NO	NO	Excluding in Township 4, Range 10 West, the W half of the E half of legal subdivision 3, the E half of the W half of legal subdivision 3, & the NW quarter of legal subdivision 5 in Section 22.
Pembina Valley WMA - Marringhurst Unit		1-May-00	-	YES	WMA	-	Wildlife	52/2000	YES	11	233	-	YES	NO	NO	
Pembina Valley WMA - Mowbray Unit		1-May-00	-	YES	WMA	-	Wildlife	52/2000	YES	11	203	-	YES	NO	NO	Excluding Township 1, Range 8 West, the SE quarter of legal subdivision 1 in Section 13
Pembina Valley WMA - Stuartville Unit		1-May-00	-	YES	WMA	-	Wildlife	52/2000	YES	11	198	-	YES	NO	NO	
Pembina Valley WMA - West Derby Unit		1-May-00	-	YES	WMA	-	Wildlife	52/2000	YES	11	264	-	YES	NO	NO	
Peonan Point WMA	64	28-Jul-01	-	YES	WMA	-	Wildlife	114/2001	YES	5B	2,179	-	YES	YES	NO	
Proulx Lake WMA	67	28-Jul-01	-	YES	WMA	-	Wildlife	114/2001	YES	5B	5,147	-	YES	YES	NO	
Riverside WMA		1-May-00	-	YES	WMA	-	Wildlife	52/2000	YES	11	84	-	YES	NO	NO	
Souris River Bend WMA		1-May-00	-	YES	WMA	-	Wildlife	52/2000	YES	11	2,196	-	YES	NO	NO	
Spruce Woods WMA		26-Apr-99	-	YES	WMA	-	Wildlife	77/99	NO	11	291	-	YES	NO	NO	

Manitoba Protected Areas Audit, Spring 1999 to Fall 2006

WMAs

ALPHA

Name	ASI #	Date of Regulation	Designation Period	Protected as of October 1, 2006	Designation Type	L.U.C.	Act	Regulation	Action since Sept. '99	Natural Regions	Size [Ha]		Crown Mineral Rights Withdrawn	Mining Rank One	FN Nom.	Comments (Representation) (Water)
											Protected	Other				
St. Malo WMA	10	28-Jul-01	-	YES	WMA	-	Wildlife	114/2001	NO*	9	-	179	NO	YES	NO	*mineral rights owned privately = no mining (Crown may buy lands and remove mineral rights soon)
Tiger Hills WMA - Delta Unit		26-Apr-99	-	YES	WMA	-	Wildlife	77/99	NO	11	65	-	YES	NO	NO	
Tiger Hills WMA - Mimir Unit		26-Apr-99	-	YES	WMA	-	Wildlife	77/99	NO	11	199	-	YES	NO	NO	
Tiger Hills WMA - Ninette Unit		1-May-00	-	YES	WMA	-	Wildlife	52/2000	YES	11	304	-	YES	NO	NO	Ninette Unit, excluding in Township 5, Range 16 West, the S half and the S half of the N half of legal subdivision 1, the E half and the E half of the E half of the W half of legal subdivision 2, and the S half of the SE quarter of legal subdivision 7 in Section 32.
Upper Assiniboine WMA - Gambler Unit	29	1-May-00	-	YES	WMA	-	Wildlife	52/2000	YES	8	58	-	YES	YES	NO	In Township 18, Range 29 West and being all that portion of the northwest quarter of Section 11 which lies to the east of the section 11 which lies to the east of the Assiniboine River
Upper Assiniboine WMA - Arrow River Unit	29	1-May-00		NO	WMA		Wildlife	52/2000	YES	8	-	132	NO	NO	NO	
Upper Assiniboine WMA - BirdTail Creek Unit	29	1-May-00		NO	WMA		Wildlife	52/2000	YES	8	-	63	NO	NO	NO	
Upper Assiniboine WMA - Mayne Unit	29	1-May-00	-	NO	WMA	-	Wildlife	52/2000	YES	8	-	128	NO	NO	NO	crown mineral rights NOT withdrawn
Upper Assiniboine WMA - Miniota Unit	29	1-May-00		NO	WMA		Wildlife	52/2000	YES	8	-	65	NO	NO	NO	
Upper Assiniboine WMA - Pleasant Plains Unit	29	1-May-00		NO	WMA		Wildlife	52/2000	YES	8	-	300	NO	NO	NO	
Upper Assiniboine WMA - Runnymede Unit	29	1-May-00	-	NO	WMA	-	Wildlife	52/2000	YES	8	-	63	NO	YES	NO	
Upper Assiniboine WMA - Reeder Unit	29	1-May-00	-	YES	WMA	-	Wildlife	52/2000	YES	8	383	-	YES	YES	NO	excluding in Township 13, Range 27 West, the S half of the S half of legal subdivision 4, the N half of the N half of the NW quarter of legal subdivision 11 & 15, and the N half of the SW quarter of legal subdivision 16 in Section 10

Manitoba Protected Areas Audit, Spring 1999 to Fall 2006

WMAs

ALPHA

Name	ASI #	Date of Regulation	Designation Period	Protected as of October 1, 2006	Designation Type	L.U.C.	Act	Regulation	Action since Sept. '99	Natural Regions	Size [Ha]		Crown Mineral Rights Withdrawn	Mining Rank One	FN Nom.	Comments (Representation) (Water)
											Protected	Other				
Upper Assiniboine WMA - Two Creeks Unit	29	1-May-00		NO	WMA		Wildlife	52/2000	YES	8	-	66	NO			
Upper Assiniboine WMA - Uno Unit	29	1-May-00		NO	WMA		Wildlife	52/2000		8	-	67	NO			
Upper Assiniboine WMA - Willen Unit	29	28-Jul-01	-	NO	WMA	-	Wildlife	114/2001	YES	8	-	323	NO	YES	NO	crown mineral rights NOT withdrawn
Wakopa WMA	12	28-Jul-01	-	YES	WMA	-	Wildlife	114/2001	YES	10	66	-	YES	YES	NO	
Washow Bay WMA	56	28-Jul-01	-	YES	WMA	-	Wildlife	114/2001	YES	5A	469	-	YES	YES	NO	Township 25, range 3 East and being Section 10, the W half of the W half of Section 14, and the E half of Section 15
Wellington WMA	12	28-Jul-01	-	YES	WMA	-	Wildlife	114/2001	YES	11	65	-	YES	YES	NO	
Whitemud Watershed WMA - Lower Assiniboine Unit		26-Apr-99	-	YES	WMA	-	Wildlife	77/99	NO	6 & 12	513	-	YES	NO	NO	
Whitemud Watershed WMA - Chipping Hill Unit		1-May-00	-	YES	WMA	-	Wildlife	52/2000	YES	6 & 12	191	-	YES	NO	NO	
Whitemud Watershed WMA - Oak Leaf Unit		1-May-00	-	YES	WMA	-	Wildlife	52/2000	YES	6 & 12	351	-	YES	NO	NO	
Whitemud Watershed WMA - Robin's Ridge Unit		1-May-00	-	YES	WMA	-	Wildlife	52/2000	YES	6 & 12	194	-	YES	NO	NO	
Whitemud Watershed WMA - Sight Hill Unit		1-May-00	-	YES	WMA	-	Wildlife	52/2000	YES	6 & 12	195	-	YES	NO	NO	

Manitoba Protected Areas Audit, Spring 1999 to Fall 2006

WMAs

ALPHA

Name	ASI #	Date of Regulation	Designation Period	Protected as of October 1, 2006	Designation Type	L.U.C.	Act	Regulation	Action since Sept.'99	Natural Regions	Size [Ha]		Crown Mineral Rights Withdrawn	Mining Rank One	FN Nom.	Comments (Representation) (Water)
											Protected	Other				
Whitewater Lake WMA		28-Jul-01	-	YES	WMA	-	Wildlife	114/2001	YES	8	2,742	-	YES	NO	NO	Township 3, Range 21 West and being Sections 26 & 27, the SE quarter of Section 34, Section 35, and the W half and SE quarter of Section 36. Township 3, Range 22 West and being the N half of Section 9, 15, 16, the NE quarter of Section 17, the SE quarter of Section 20, Sections 21, 22, 27, 28, and the E half of Section 33. Township 4, Range 21 West and being the S half of Section 2.

Manitoba Protected Areas Audit, Spring 1999 to Fall 2006

Ecological Reserves

ALPHA

Name	ASI #	Date of Regulation	Designation Period	Protected as of October 1, 2006	Designation Type	L.U.C.	Act	Regulation	Protection Type	Action since Sept. '99	Natural Regions	Size [Ha]		Crown Mineral Rights Withdrawn	Mining Rank One	FN Nom.	Comments (Representation) (Water)
												Protected	Other				
Armit Meadows Ecological Reserve		26-Sep-05	-	YES	Ecological Reserve	-	Ecological Reserves	166/87 amended by 138/2005	-	YES	7	263	-	YES	YES	NO	
Birch River Ecological Reserve		26-Sep-05	-	YES	Ecological Reserve	-	Ecological Reserves	166/87 amended by 138/2005	-	YES	7	183	-	YES	YES	NO	
Brokenhead Wetland Ecological Reserve		24-Jun-05	-	YES	Ecological Reserve	-	Ecological Reserves	166/87 amended by 89/2005	-	YES	5B	563	-	YES	YES	NO	
Shay Ecological Reserve		30-Nov-04	-	YES	Ecological Reserve	-	Ecological Reserves	166/87 amended by 211/2004	-	YES	9	7	-	YES	YES	NO	
Little George Island Ecological Reserve		18-May-04	-	YES	Ecological Reserve	-	Ecological Reserves	166/87 amended by 76/2004	-	YES	5A	15	-	YES	YES	NO	
Whitemouth Island Ecological Reserve		24-Mar-99	-	YES	Ecological Reserve	-	Ecological Reserves	166/87 amended by 65/99	-	NO	5C	613	-	YES	YES	NO	

Manitoba Protected Areas Audit, Spring 1999 to Fall 2006

Provincial Forests Zones

ALPHA

Name	ASI #	Date of Regulation	Designation Period	Protected as of October 1, 2006	Designation Type	L.U.C.	Act	Regulation	Protection Type	Action since Sept. '99	Natural Regions	Size [Ha]		Crown Mineral Rights Withdrawn	Mining Rank One	FN Norm.	Comments (Representation) (Water)
												Protected	Other				
Bell and Steeprock Canyons Protected Area		18-May-04	-	YES	-	-	Forest	75/2004	-	YES	5b, 7	11,310	-	YES	YES	NO	Bell and Steeprock Canyons Protected Area has its Crown Mineral Rights removed by: Regulation 117/2004 (amends 340/87) on June 14, 2004. Protection under the Forest Act came when lands within Porcupine Provincial Forest was protected with regulation 75/2004 on May 18, 2004.

Manitoba Protected Areas Audit, Spring 1999 to Fall 2006

Private Lands

ALPHA

Name	ASI #	Date of Regulation	Designation Period	Protected as of October 1, 2006	Designation Type	L.U.C.	Act	Regulation	Protection Type	Action since Sept. '99	Natural Regions	Size [Ha]		Crown Mineral Rights Withdrawn	Mining Rank One	FN Nom.	Comments (Representation) (Water)
												Protected	Other				
Tall Grass Prairie Preserve (Nature Conservancy of Canada)		14-Jun-04	-	YES	Private Land	-	Mines	340/87 amended by 117/2004	Memorandum of Agreement	YES	9	4,118	2,095	YES	YES*	NO	Northwest quarter of Section 13, Township 2, Range 6 E.P.M. excluding Road Plan 7867 WLTO. Northwest quarter of Section 13, Township 2, Range 6 E.P.M. excluding Road Plans 7867 and 11406 WLTO. Southeast quarter of Section 24, Township 2, Range 6 E.P.M. excluding Road Plan 7867 WLTO. Southeast quarter of Section 27, township 2, rang 6 E.M.P. Northeast quarter of Section 1, township 3, rang 6 E.M.P. North half of Northeast quarter of section 12, township 3, rang 6 E.M.P. Southeast quarter of Section 13, township 3, rang 6 E.M.P. Northwest quarter of Section 13, township 3, rang 6 E.M.P. East half of Southeast quarter of section 14, township 3, rang 6 E.M.P. West half of Southeast quarter of Section 14, Township 3, Range 6 E.P.M. Southwest quarter of Section 14, township 3, rang 6 E.M.P. West half of Northeast quarter of Section 14, Township 3, Range 6 E.P.M. East half of Northeast quarter of section 14, township 3, rang 6 E.M.P. East half of Southeast quarter of section 23, township 3, Range 6 E.M.P. East half of Southwest quarter of Section section 23, township 3, Range 6 E.M.P. Southeast quarter of Section 24, township 3, Range 6 E.M.P. Southwest quarter of Section 24, township 3, Range 6 E.M.P. Northeast quarter of Section 24, township 3, Range 6 E.M.P. Northeast quarter of Section 25, Township 3, Range 6 E.P.M."

Manitoba Protected Areas Audit, Spring 1999 to Fall 2006

Private Lands

ALPHA

Name	ASI #	Date of Regulation	Designation Period	Protected as of October 1, 2006	Designation Type	L.U.C.	Act	Regulation	Protection Type	Action since Sept.'99	Natural Regions	Size [Ha]		Crown Mineral Rights Withdrawn	Mining Rank One	FN Nom.	Comments (Representation) (Water)
												Protected	Other				
Tall Grass Prairie Preserve (Nature Conservancy of Canada)		14-Jun-04	-	YES	Private Land	-	Mines		Memorandum of Agreement	YES	9	4,118	2,095	YES	YES*	NO	Southeast quarter of section 12, township 1, range 6 EPM Northeast quarter of section 12, township 1, range 6 EPM Southeast quarter of section 24, township 2, range 6 EPM excl. Road Plan 7867 WLTO Southwest quarter of section 25, township 2, range 6 EPM Northwest quarter of section 18, township 3, range 6 EPM Northwest quarter of section 7, township 2, range 7 EPM Southwest quarter of section 18, township 2, range 7 EPM Northeast quarter of section 19, township 1, range 8 EPM West half of northwest quarter of section 20, township 1, range 8 EPM Southeast quarter of section 6, township 2, range 6 EPM