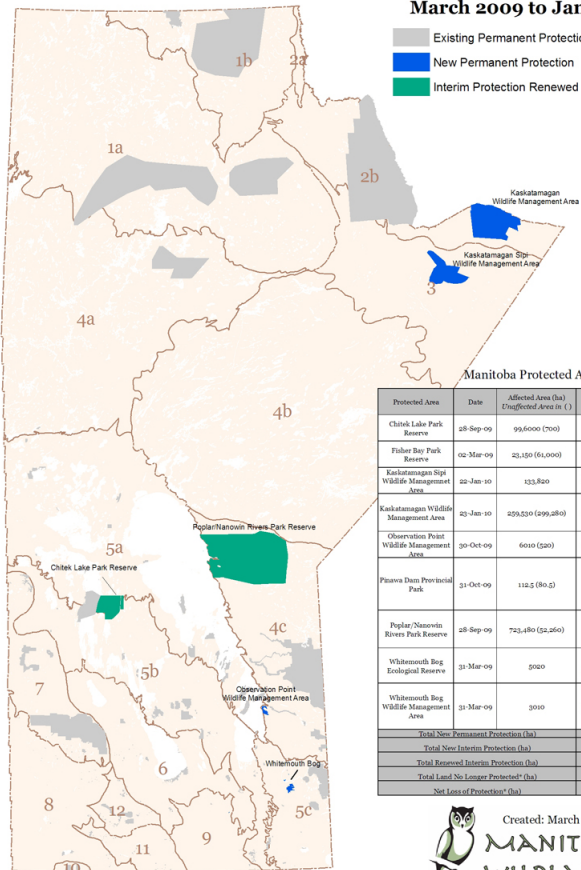


Manitoba Protected Areas March 2009 to January 2010

-  Existing Permanent Protection - prior to Feb. 2009
-  New Permanent Protection
-  Interim Protection Renewed



Manitoba Protected Areas Actions

Protected Area	Date	Affected Area (ha) Unaffected Area in ()	Act	Type of Action
Chitek Lake Park Reserve	28-Sep-09	99,600 (700)	Parks	Parks Reserve Designation extended
Fisher Bay Park Reserve	02-Mar-09	23,150 (61,000)	Mines	Backcountry Lands Withdrawn from Prospecting
Kaskatamagan Sipi Wildlife Management Area	22-Jan-10	133,820	Wildlife/Mines	New Protection
Kaskatamagan Wildlife Management Area	23-Jan-10	259,530 (299,280)	Wildlife/Mines	New Protection
Observation Point Wildlife Management Area	30-Oct-09	6010 (520)	Wildlife/Mines	New Protection
Pinawa Dam Provincial Park	31-Oct-09	112.5 (80.5)	Parks/Mines	Designation of Land/Use Category changed to Backcountry, and Heritage. New Protection
Poplar/Nanowin River Park Reserve	28-Sep-09	723,480 (52,260)	Parks	Parks Reserve Designation extended.
Whitemouth Bog Ecological Reserve	31-Mar-09	5020	Ecological Reserves/Mines	Designated as Ecological Reserve. New Protection
Whitemouth Bog Wildlife Management Area	31-Mar-09	3010	Wildlife/Mines	New Protection
Total New Permanent Protection (ha)				407,604
Total New Interim Protection (ha)				0
Total Renewed Interim Protection (ha)				88,052
Total Land No Longer Protected* (ha)				0
Net Loss of Protection* (ha)				0

For more information, go to:
http://manitobawildlands.org/pa_grades.htm



Created: March 2010 Version 3

**MANITOBA
WILDLANDS.**

Map for Illustrative Purposes Only