

PROTECTED AREAS IN MANITOBA 1990

Protected Areas in Manitoba

Natural Areas

-  Ecological Reserve
-  National Park

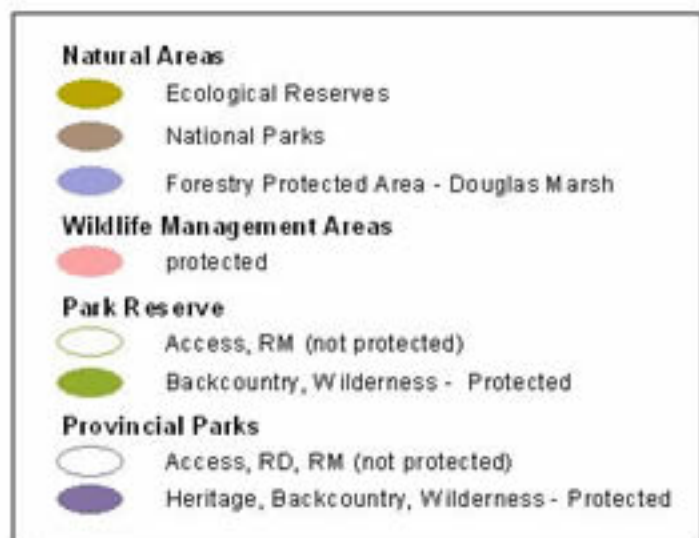
Roger Schroeder - (204) 945-4366 Fax (204) 945-0012
toll free - 1-800-282-8069 ext 4366
email - rschroeder@gov.mb.ca
Box 53, 200 Saulteaux Cres, Wpg, Mb, R3J 3W3

Map is for illustrative purposes only.
Contact Parks and Natural Areas for more information.



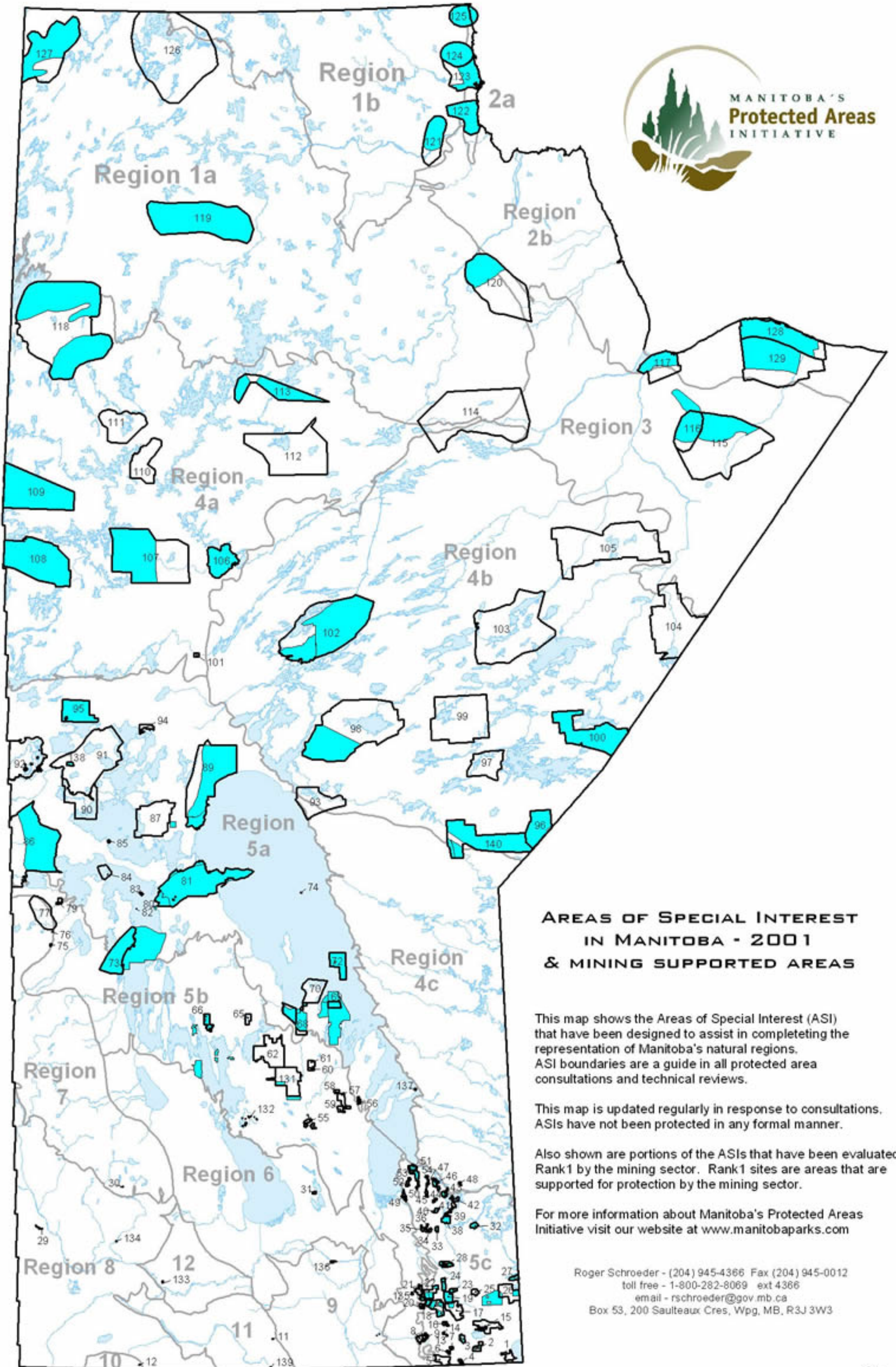


PROTECTED AREAS IN MANITOBA 2001



Map is for illustrative purposes only.
Contact Parks and Natural Areas Branch
for more information.

Roger Schroeder - (204) 945-4366 Fax (204) 945-0012
toll free - 1-800-282-8069 ext 4366
email - rschroeder@gov.mb.ca
Box 53, 200 Saulteaux Cres, Wpg, MB, R3J 3W3



**AREAS OF SPECIAL INTEREST
IN MANITOBA - 2001
& MINING SUPPORTED AREAS**

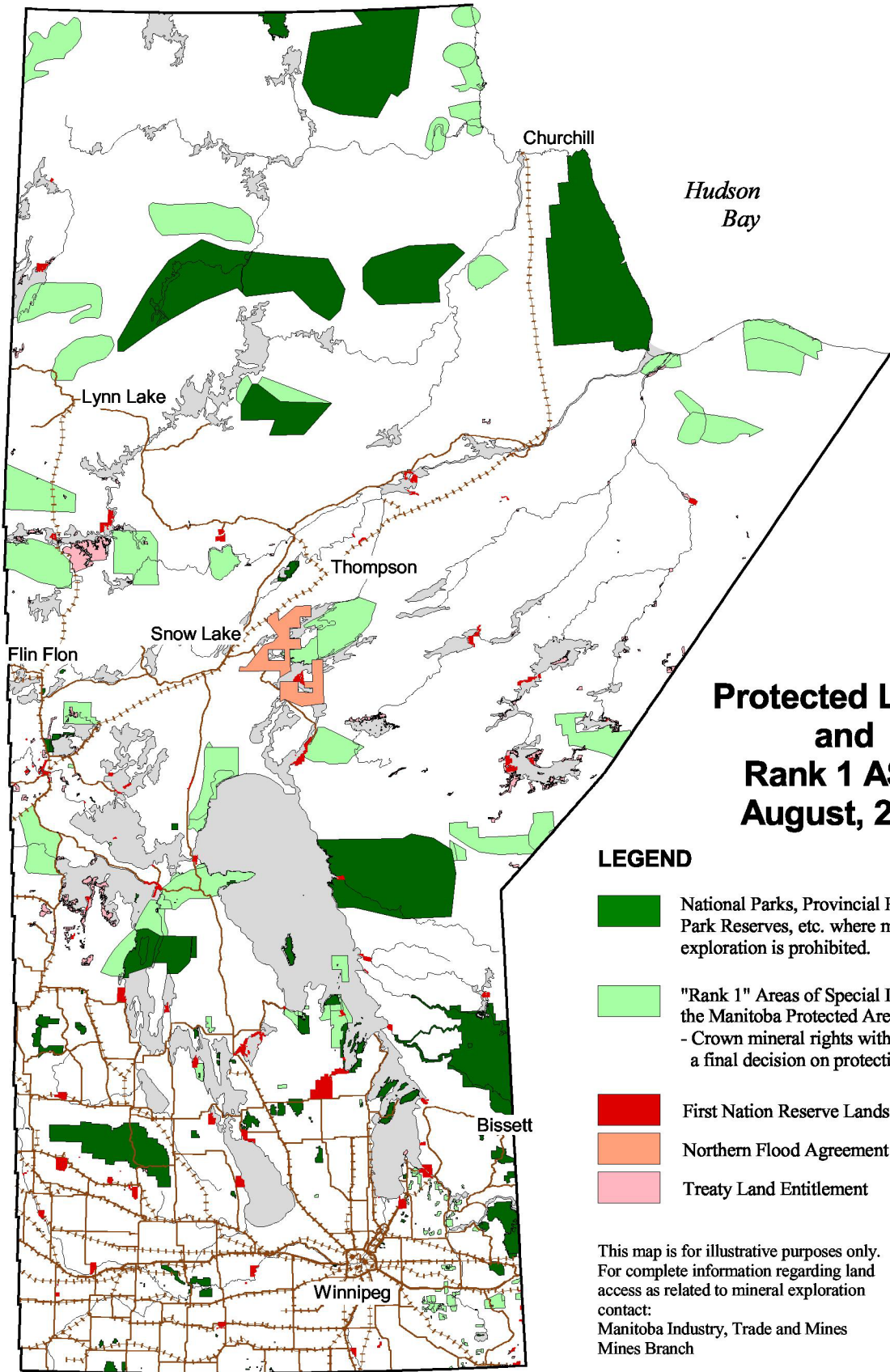
This map shows the Areas of Special Interest (ASI) that have been designed to assist in completing the representation of Manitoba's natural regions. ASI boundaries are a guide in all protected area consultations and technical reviews.

This map is updated regularly in response to consultations. ASIs have not been protected in any formal manner.

Also shown are portions of the ASIs that have been evaluated Rank 1 by the mining sector. Rank 1 sites are areas that are supported for protection by the mining sector.

For more information about Manitoba's Protected Areas Initiative visit our website at www.manitobaparks.com

Roger Schroeder - (204) 945-4366 Fax (204) 945-0012
toll free - 1-800-282-8069 ext 4366
email - rschroeder@gov.mb.ca
Box 53, 200 Saulteaux Cres, Wpg, MB, R3J 3W3



Protected Lands and Rank 1 ASI's August, 2002

LEGEND

- National Parks, Provincial Parks and Park Reserves, etc. where mineral exploration is prohibited.
- "Rank 1" Areas of Special Interest in the Manitoba Protected Areas Initiative - Crown mineral rights withdrawn pending a final decision on protection.
- First Nation Reserve Lands
- Northern Flood Agreement Hold Area
- Treaty Land Entitlement

This map is for illustrative purposes only. For complete information regarding land access as related to mineral exploration contact:
 Manitoba Industry, Trade and Mines
 Mines Branch

